




TECHNICAL DATA SHEET

StepliteX ThermoProtec S5 green/black

General information

| Size range | |
|-------------------------------------------------------------------------------------|-----------|
| • EU | 37 - 48 |
| • UK | 4 - 13 |
| • US | 5 - 15 |
| The testresults in this technical datasheet are performed on size EU 42, UK 8, US 9 | |
| Weight / pair | |
| • Safety level: Non-metallic toe cap & midsole | ± 2 120 g |
| Colours | |
|  | |
| green - black | |

Upper

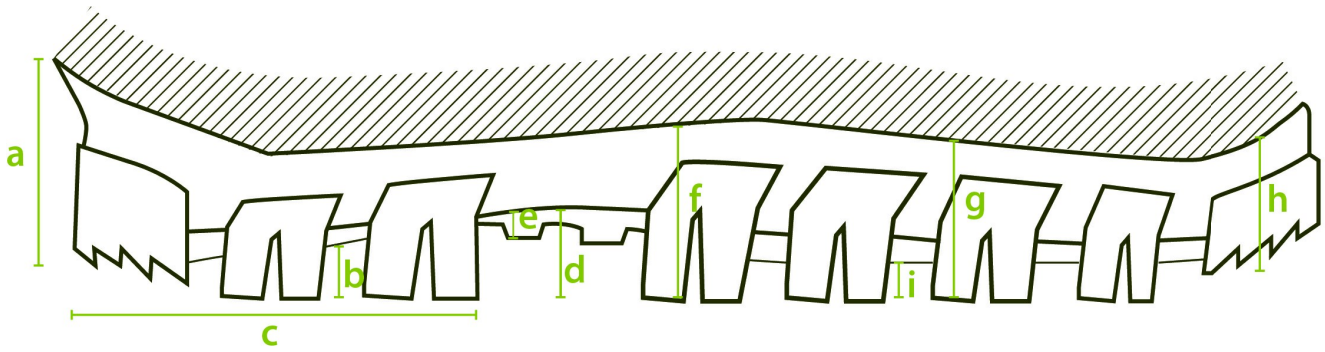
| A. Dimensions | |
|-----------------|---------------------------------------------|
| • Height | outer measure: 36.5 - 39.5 cm |
| | cutting edge: 27.0 - 29.5 cm |
| • Foot length | outer measure: 31.5 cm |
| | inner measure: 28.0 cm |
| B. Thickness | |
| • Upper edge | 2.6 - 3.1 mm |
| • Calf | 2.8 - 3.4 mm |
| • Shinbone | 2.8 - 3.6 mm |
| • Ankle | 4.2 - 5.3 mm |
| • Heel | 5.6 - 6.0 mm |
| C. Raw material | |
| | NEOTANE (proprietary polyurethane compound) |
| D. Density | |
| | 0.65 - 0.70 g/mL |

| E. Tensile strength | | |
|-------------------------------------|-----------------------------------|-------------------------|
| (incl. lining) | 10 ± 2 N/mm ² | |
| F. Elongation | | |
| (incl. lining) | 600 +/- 100% | |
| G. Hardness | | |
| | 43 +/- 2 Sh A | |
| H. Tear strength | | |
| (incl. lining) N/mm | 10.0 ± 2.0 N/mm | |
| I. Aging | | |
| (incl. lining) | 7 days at 70 °C | 14 days at 70 °C |
| • Tensile strength | 11.6 MPa | 9.0 MPa |
| • Elongation | 580 ± 20% | 600 ± 20% |
| • Tear strength | 11.4 N/mm | 9.0 N/mm |
| J. Chemical resistance | | |
| | see detailed list | |
| K. Environmental temperature | | |
| • Maximum | ± 100 °C | |
| • Minimum | Cold insulation down to -40 °C | |

Lining

| A. Material | |
|--------------------|--------------------------------|
| | PU coating on polyester fabric |
| B. Seams | |
| | Welded seams |

Outsole profile



A. Dimensions

• Heel

| | | |
|-----------------|-----|----------|
| • Thickness | (a) | 47.3 mm |
| • Profile depth | (b) | 12.6 mm |
| • Length | (c) | 102.9 mm |
| • Width | | 87.3 mm |

• Middle foot

| | | |
|--------------------------|-----|---------|
| • Height | (d) | 15.8 mm |
| • Ladder anti-slip grips | (e) | 5.8 mm |

• Outsole

| | | |
|-----------------|-----|---------|
| • Thickness | (f) | 43.1 mm |
| | (g) | 33.7 mm |
| | (h) | 26.0 mm |
| • Profile depth | (i) | 6.7 mm |

B. Raw material

NEOTANE (proprietary polyurethane compound)

C. Density

0.65 - 0.70 g/mL

D. Mechanical characteristics

See upper (E)-(F)-(H)

E. Energy absorption of the seat region

40-50 J (requirement ≥ 20 J)

F. Antistatic

dry: $1 \times 10^8 - 1 \times 10^9$ Ohm

wet: $1 \times 10^7 - 1 \times 10^9$ Ohm

G. Abrasion resistance




50 mm³

| | |
|------------------------------------|-----------------------------------|
| H. Hardness | |
| | 60 +/- 10 Sh A |
| I. Footwear slip resistance | |
| | SR |
| J. Chemical resistance | |
| | see detailed list |

Safety

| | Standard | Required | Type | Result |
|------------------------------------|-----------------------------------------------------|-----------|--------------|---------|
| Toe cap & midsole | | | | |
| Nail penetration resistance | EN ISO 20344:2022+A1:2024 EN ISO 20345:2022+A1:2024 | > 1100 N | Non-metallic | 1100 N |
| Impact resistance (200J) | EN ISO 20344:2022+A1:2024 EN ISO 20345:2022+A1:2024 | > 14.0 mm | Non-metallic | 14.0 mm |
| Impact resistance (125J) | CSA Z195-14 | > 12.7 mm | Non-metallic | 21.5 mm |
| Impact resistance at -18 °C (125J) | CSA Z195-14 | > 12.7 mm | Non-metallic | 28.1 mm |
| Compression resistance | EN ISO 20344:2022+A1:2024 EN ISO 20345:2022+A1:2024 | > 14.0 mm | Non-metallic | 18.0 mm |
| Compression resistance | ASTM F2413-24 | > 12.7 mm | Non-metallic | 20.8 mm |
| Width of toe cap | outer measure: 48.0 mm | | | |
| Height of toe cap | outer measure: 95.0 mm | | | |
| Toe cap | Composite material such as fiberglass | | | |

Certificates

| | |
|------------------------------------------------------------------------------------|----------------------------------------------------------------------|
|  | EN ISO 20344:2022+A1:2024 EN ISO 20345:2022+A1:2024 2410093-02-86 |
|  | EN ISO 20345:2011 AB0321/19224-01/E00-00 |
|  | CSA Z195-14 70048629 |
| | ASTM F2413-24 70048629 |

Accessories

Thermo-moulded footbed

Two layers

| | |
|-------------|---------------|
| • Toplayer | woven textile |
| • Colour | black |
| • Thickness | 0.70 mm |
| • Bottom | PU foam |
| • Colour | black |
| • Thickness | 3.0 - 7.0 mm |



Washable at 30°C